

Volume 11, issue 2
JULY 2016

Religious of the Third Age

ROTA

The CLRI(NSW) ROTA calendar for 2016 is available on the website [www.clrinsw.org] or you are always welcome to call us for a copy.

Put dates in your diary and remember to RSVP when required!

New suggestions for outings are always more than welcome.

TO BECOME A ROTA MEMBER:

- Phone Ann on 9663 2199
- Email clrinsw@ozemail.com.au
- If you no longer wish to remain on the ROTA mailing list please let Ann know. If you need a ROTA badge give Ann a call on 9663 2199.

INCLUDED IN THIS MAILING:

1. Second 2016 ROTA newsletter.
2. Booking forms for July, August, September and October activities.



Winter is well and truly here! We do hope this newsletter finds everyone keeping warm and well.

Pictured below are some members enjoying our recently held Lenten day of Spirituality at the Mercy Congregational Centre, Parramatta.



Coming up this month we shall meet at Dooleys Lidcombe for lunch followed by a tour of the QVB in August.

Our spring outing has had a change of direction to the Australian Museum and in October we head to Watsons Bay via Ferry.

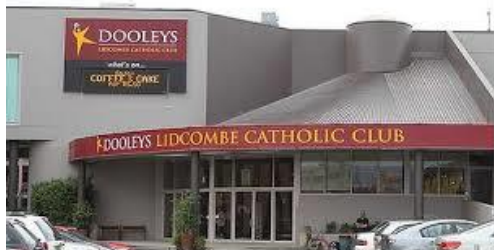
Looking forward to receiving your rsvps for our upcoming outings!

JULY, AUGUST, SEPTEMBER AND OCTOBER ACTIVITIES

July 21 Thursday

Lunch at Dooleys Lidcombe

12.00 pm



\$ cost of lunch

Enjoy lunch together inside during winter at Dooleys, Lidcombe.

We shall meet for lunch at midday. Dooleys is located at 24 John Street, Lidcombe.

We need to book for a group, so RSVP to Ann by 14 July 2016.

August 16 Tuesday

Tour of the Queen Victoria Building

11.30 am

\$15 pp (pay on the day)

Experience the history and grandeur of the Queen Victoria Building with a guided tour.

Learn about the history of the building from design, through its life as Sydney markets its refurbishments and life today as a bustling shopping centre. The tour runs for 45 minutes. We shall meet on the ground floor at the Concierge desk and enjoy lunch afterward at one of the many cafes. Access the Queen Victoria Building via Town Hall Station.



We need to book for a group so RSVP to Ann by 2 August 2016.

September 19 Monday

Australian Museum Exhibition

Australian Geographic Nature Photographer of the Year 2016

11.30 am

\$11 concession (pay on the day)

Presented for the first time in Sydney, the Australian Geographic Nature Photographer of the Year 2016 exhibition celebrates the extraordinary natural wonder of the Australia, New Zealand, Antarctica and New Guinea bioregions. Entry via William Street, Sydney. The Australian Museum is located on the corner of College Street and William Street Sydney, just across the road from Hyde Park and opposite St.Mary's Cathedral. Museum Café for lunch. **RSVP to Ann by 1 September 2016.**

October 19 Wednesday

Ferry trip to Watsons Bay

11.00am \$Concession ferry ticket



Enjoy a day out on the Harbour with a ferry trip to Watsons Bay. Take away fish and chips from the Wharf at Watsons Bay can be enjoyed together afterward. The ferry departs Wharf 4 Circular Quay at 11.10 arriving at Watsons Bay 11.27 am.

RSVP to Ann by 7 October 2016.