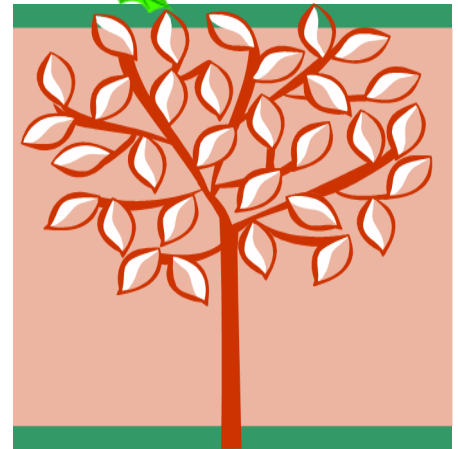




ROTA



If you need a ROTA badge give Ann a call on 9663.2199 and we'll arrange to get a badge to you. It is handy to be able to recognize other members at bus stops, stations and venues!

ROTA has over 100 members: would you like to join us?

TO BECOME A ROTA MEMBER:

- Contact Ann on 9663 2199
- Email clrinsw@ozemail.com.au

IF YOU NO LONGER WISH TO REMAIN ON THE ROTA MAILING LIST please let Ann know.

Included in this mailing:

- 1. FOURTH 2013 ROTA Newsletter**
- 2. Booking forms for the February and March activities.**

This edition of the ROTA newsletter comes with our very best wishes for a wonderful Christmas as we near the close of 2013. It has been a another busy and fun year full of many lovely outings and tours and we look forward to seeing you at our ROTA events in 2014!

We wish to thank once again the Good Samaritan Centre for making available their venue for our Day of Spirituality in June as well as the Sisters of Mercy, Parramatta for their hospitality for our Advent Spirituality Experience in December.

Don't hesitate to let us know of any suggestions you may have for future activities. Enjoy the season of Christmas and we look forward to your company on our outings next year!

THE CLRI(NSW) ROTA calendar for 2014

Is available on the website [www.clrinsw.org] or you are always welcome to call us for a copy.

Put dates in your diary and remember to RSVP when required!

New suggestions for outings are always more than welcome.



February 18
Tuesday
11.00 am
\$5.00 pp

Museum of Sydney *Gadigal Place* Exhibition

Gadigal Place explores the traditional lives and early contact experiences of the Gadigal and other Aboriginal clans of the Sydney basin. It reveals fascinating stories about how Aboriginal and non-Aboriginal people interacted in the early days of the colony.



The Museum of Sydney is located on the corner of Philip & Bridge Streets, Sydney. The Museum is a two minute walk from Circular Quay Station. We shall meet at the Museum Entrance at 11.00 am. The Museum of Sydney Café offers tea/coffee, snacks as well as lunch menu items.

We need to book for the group, so RSVP to Ann by 20 January 2014.



March 20
Thursday
11.00 am
\$5.00 pp

Chinese Garden of Friendship



Much more than just a city garden, the walled Chinese Garden respectfully recreates the philosophy and harmony of a traditional Chinese garden with waterfalls, lakes, exotic plants and pavilions. A peaceful oasis right in the heart of our city!

Meet at the entrance to the Gardens at Pier Street, Darling Harbour at 11.00am. After the garden tour refreshments may be enjoyed at the Garden Teahouse.

For buses travelling through the CBD along Elizabeth, Castlereagh, George or York streets, alight at Liverpool Street. The Liverpool Street entrance into Darling Harbour is adjacent to the Chinese Garden of Friendship.

We need to book for the group so RSVP to Ann by 1 March 2014 .