



ROTA

"Let the resurrection joy lift us from loneliness and weakness and despair to strength and beauty and happiness." Floyd W. Tomkins

If you need a ROTA badge give Ann a call on 9663.2199 and we'll arrange to get a badge to you. It is handy to be able to recognize other members at bus stops, stations and venues!

ROTA has over 110 members: would you like to join us?

TO BECOME A ROTA MEMBER:

- Contact Ann on 9663 2199
- Email clrinsw@ozemail.com.au

IF YOU NO LONGER WISH TO REMAIN ON THE ROTA MAILING LIST please let Ann know.

Included in this mailing:

- 1. FIRST 2013 ROTA Newsletter**
- 2. Booking forms for April, May and June.**

Our first Newsletter of 2013 comes to you along with booking sheets for our next three months' activities which we hope will be as well received as our first months of this year's activities have been!



The Margaret Olley 'Home' Exhibition at the Museum of Sydney was appreciatively enjoyed by many members who went along in February.

A comprehensive tour of the Auburn Gallipoli Mosque was given to ROTA members last week for our March activity. Come along to view the restored Sisters of Charity Chapel in April followed by an 'access' NO STEPS involved Tour of our very own Opera House. In June we shall once again have our day of Spirituality at the Good Samaritan Centre, Glebe.

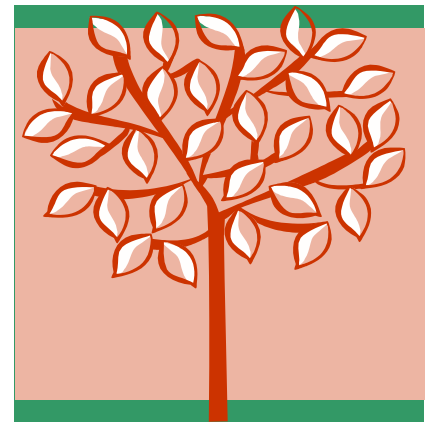


Enjoy our warm Sydney autumn days as we prepare for Christ's Resurrection this Easter.



The next *Aged Care Seminar* will be held on Friday 12 April 2013 at the Good Samaritan Centre, Glebe entitled

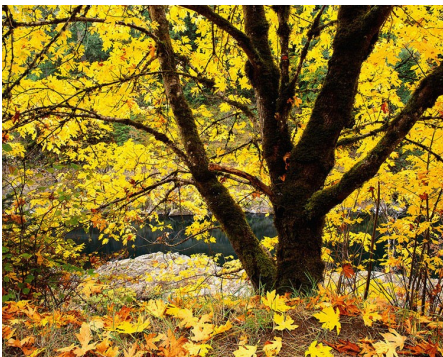
Dementia: Where are we Going?



CHECK YOUR CLRI(NSW) ROTA calendar for 2013 on the website [www.clrinsw.org] or call us for a copy.

Put dates in your diary and remember to RSVP when required!

Please do let Ann know if you have any ideas for future outings!



APRIL, MAY AND JUNE EVENTS FOR 2013

APRIL 9 Tuesday PLEASE NOTE DATE CHANGE
10.30 am
Tour of (restored) Sisters of Charity Chapel,
Potts Point

We shall tour the restored Sisters of Charity Chapel at Potts Point in April. The 311 bus stops in McLeay St (at the top of Rockwall Crescent). We shall meet at the gates of the Convent where Sr Mary Francis will greet us to begin the tour.

Afterwards we can enjoy a cup of tea or coffee at the nearby café.

We need to book for a group, so RSVP to Ann by 1 April 2013.



**SEE INFORMATION FOR
APRIL, MAY & JUNE
ACTIVITIES ON the
BOOKING FORMS
ENCLOSED**

May 13 Monday
12.00 noon Access Tour of Opera House
\$24.50 per person

Come along and view the Opera House from behind the scenes. There are no steps involved in the tour at all. The Access Tour of the Opera House departs from the Guided Tours Meeting Point on the Lower Concourse Walkway.

Departing at 12 noon, the Access Tour offers a maximum of 10 people so return your rsvp as soon as possible to Ann.

Lunch may be enjoyed at the Concourse Café or BYO.

Please RSVP to Ann by 26 April 2013.



June 4 Tuesday
11.00am

In 2013 the Spirituality Day will be held at the Good Samaritan Centre, Glebe.

This day is an opportunity to spend some time in quiet prayer and reflection.

This event was most popular last year so RSVP to Ann by 20 May 2013!