



ROTA



If you need a ROTA badge give Ann a call on 9663.2199 and we'll arrange to get a badge to you. It is handy to be able to recognize other members at bus stops, stations and venues!

ROTA has over 100 members: would you like to join us?

TO BECOME A ROTA MEMBER:

- Contact Ann on
9663 2199
- Email
clrinsw@ozemail.com.au

IF YOU NO LONGER WISH TO REMAIN ON THE ROTA MAILING LIST please let Ann know.

Included in this mailing:

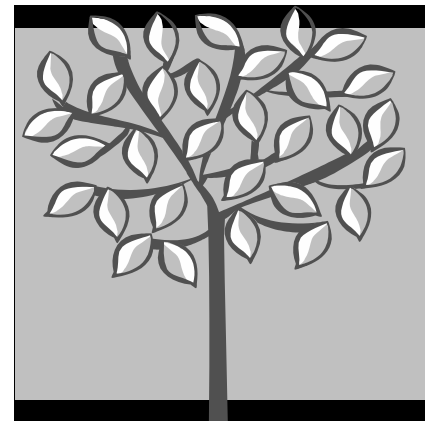
1. **FOURTH 2012 ROTA Newsletter**
2. **Booking forms for the February and March activities.**

We'd like to wish everyone a wonderful Christmas as we near the close of 2012. It has been a busy year of many lovely outings and tours and we look forward to seeing you at our ROTA events in 2013!

This newsletter brings us to the planning of Christmas gatherings and publishing our calendar of activities for 2013.

We wish to thank once again the Good Samaritan Centre for making available their venue for our Day of Spirituality in June and the Sisters of Mercy, North Sydney for the use of Stormanston for our Advent Spirituality Experience in December.

We're always on the lookout for more and different activities, so if you have any suggestions send them to us for 2013.



CHECK YOUR CLRI(NSW) ROTA calendar for 2013 on the website [www.clrinsw.org] or call us for a copy.

Remember to return your registration sheets for all events with cheque payment if needed.

Merry.
Christmas



2013 events

February 14 Thursday

11.00 am

Museum of Sydney

Margaret Olley

Home Exhibition

\$5.00 pp

We shall view the 'Home' Exhibition of Margaret Olley's paintings at The Museum of Sydney which is located on the cnr of Philip & Bridge Streets, Sydney. The Museum is a two minute walk from Circular Quay Station. We shall meet at the Museum Entrance at 11.00 am. Lunch may be enjoyed at the Museum of Sydney Café afterwards.

We have to book for the group, so RSVP to Ann by 20 January 2013



**SEE INFORMATION
FOR FEBRUARY &
MARCH
ACTIVITIES ON THE
ENCLOSED
BOOKING FORMS**

March 13 Wednesday

11.00 am

Tour of The Auburn Gallipoli Mosque

15-19 Gelibolu Parade, Auburn

\$5.00 pp

A tour of the The Auburn Gallipoli Mosque has been planned for our March outing. The largest Mosque in Australia, the Auburn Gallipoli Mosque is an Ottoman-style mosque in Auburn.

The Mosque is a short 5 minute walk from Auburn Station. Lunch may be enjoyed afterward at one of the nearby cafés.

We need to book for the tour, so RSVP to Ann by 22 February 2013.