



ROTA

Praise be to the God and Father of our Lord Jesus Christ. In his great mercy he has given us new birth into a living hope through the resurrection of Jesus Christ from the dead. ~ 1 Peter 1:3

If you need a ROTA badge give Ann a call on 9663.2199 and we'll arrange to get a badge to you. It is handy to be able to recognize other members at bus stops, stations and venues!

ROTA has over 110 members: would you like to join us?

TO BECOME A ROTA MEMBER:

- Contact Ann on
9663 2199
- Email
clrinsw@ozemail.com.au

IF YOU NO LONGER WISH TO REMAIN ON THE ROTA MAILING LIST please let Ann know.

Included in this mailing:

1. **FIRST 2012 ROTA Newsletter**
2. **Booking forms for April, May and June.**



Welcome, first, to our new members who have joined ROTA over the past little while!

Our first Newsletter of 2012 hopefully arrives in the post to you dry! The abundance of rain we have been given has not dampened spirits nor attendance at our outings since Christmas.

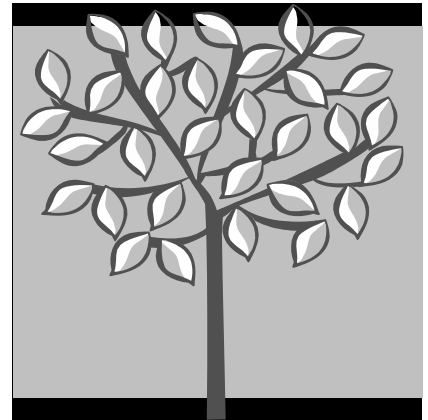


February saw us at the ABC Centre at Ultimo where members met popular radio programme hosts while undertaking the tour. Our March outing proved challenging, providing an unexpected bonding session while negotiating the many steps to Nutcote, where finally a lovely day was enjoyed by all!

We do hope you enjoy our upcoming events in the form of the Museum of Sydney Exhibition in April followed by the wonderful tour of the Opera House and of course our annual day of Spirituality at Good Samaritan Centre, Glebe.



May we be encouraged by the arrival of the new season of Autumn as we prepare for Christ's Resurrection this Easter.



CHECK YOUR CLRI(NSW) ROTA calendar for 2012 on the website [www.clrinsw.org] or call us for a copy.

Put dates in your diary and remember to RSVP when required!

Please do let Ann know if you have any ideas for future outings!



APRIL, MAY AND JUNE EVENTS FOR 2012

APRIL 12 Thursday

**11.00am Museum of Sydney Exhibition
Home Front: Wartime Sydney 1939-45**

Cost \$5.00

The Museum of Sydney is located at the Corner of Phillip and Bridge Streets, Sydney.

The Museum of Sydney is a ten minute walk from Circular Quay train station.

We shall meet at the Museum Entrance at 11.00 am.

The Museum of Sydney Café offers tea/coffee, snacks as well as lunch menu items.

We need to book for a large group, so RSVP to Ann by April 2 2012.



**SEE INFORMATION FOR
APRIL, MAY & JUNE
ACTIVITIES ON the
BOOKING FORMS
ENCLOSED**

May 7 Monday or May 11 Friday

12.00 noon Access Tour of Opera House

Come along and view the Opera House from behind the scenes. The Access Tour of the Opera House departs from the Guided Tours Meeting Point on the Lower Concourse Walkway.

Departing at 12 noon, the Access Tour enables a maximum of 8 people per tour so we have booked 2 days in the same week so that ROTA members may take advantage of either day. The first 16 people to book and pay shall be confirmed on the Tour.



Lunch may be enjoyed at the Concourse Café or BYO. **Please RSVP to Ann by 25 April 2012**

June 5 Tuesday

11.00am



In 2012 the Spirituality Day will be held at the Good Samaritan Centre, Glebe.

This day is an opportunity to spend some time in quiet prayer and reflection.

This event was very popular last year so RSVP to Ann by 22 May 2012!

BYO Lunch, coffee and tea available.