

# ROTA

*CLRI(NSW)*

If you need a ROTA badge give Ann a call on 9663.2199 and we'll arrange to get a badge to you. It is handy to be able to recognize other members at bus stops, stations and venues!

**ROTA has 100 members: would you like to join us?**

**TO BECOME A ROTA MEMBER:**

- Contact Ann on  
9663 2199
- Email  
[clrinsw@ozemail.com.au](mailto:clrinsw@ozemail.com.au)

**STOP PRESS!**  
**Included in this mailing:**

- 1. Fourth 2008 ROTA Newsletter**
- 2. Booking forms for the October & November activities**

- Tour of Government House
- End of Year Lunch

**Upcoming CLRI(NSW) events for older Religious:**

**Friday October 31 Aged Care Seminar Day at Good Samaritan Centre, Glebe.**

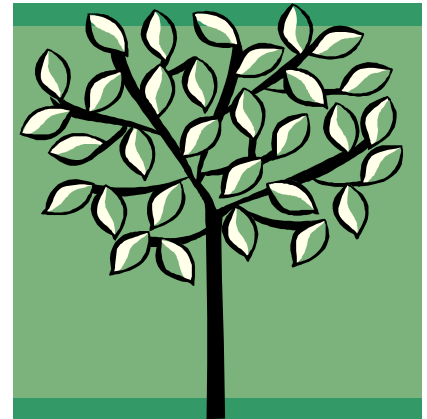
***What Happens when the Goalposts Move?***

**Call 9663 2199 for details closer to the date**

## LOOKING FORWARD TO SPRING!



Our Spirituality Day with Yvonne Parker proved to be not only very popular but well worth while as she led us through different activities during the day. The rain held off until just before we left so we were able to sit outside for some reflection time and then for lunch. Thanks to all those who brought along something to share for morning tea and to Yvonne for our little Forget-me-not plants to take home and care for. How is yours doing? Thanks to Yvonne for another day that gave us something to think about. Hope to see you again next year. And our gratitude to the Good Samaritan Sisters who gifted us with the use of the venue.



**CHECK YOUR CLRI(NSW) ROTA calendar for 2008 on the website**  
**[[www.clrinsw.org](http://www.clrinsw.org)]**



The Christmas in July lunch at Stormanston House was much appreciated again this year! Forty revelers gathered for some fun, chatter and a lovely lunch provided by Paula Burnett. This may become an annual event!



Our thanks to the Sisters of Mercy, North Sydney who made the use of this very appropriate venue available to ROTA.

## SEPTEMBER, OCTOBER, NOVEMBER

“To be interested in the changing seasons is a happier state of mind than to be hopelessly in love with Spring” George Santayana

### SEPTEMBER

**ABC Studio Audience The New Inventors on Friday 12 September.** The ABC have informed us they can take up to 20 people and we are currently fully booked. Those booked need to arrive by 12.20pm and bring something warm to wear as it gets cold in the studio. There is an ABC Café where a light lunch/tea/coffee can be enjoyed beforehand—or BYO as was stated in the flyer.

The ABC Centre is at 700 Harris Street, Ultimo. Central Station is the closest railway station to the ABC. It is a ten minute walk from Central to the ABC's entrances in Harris Street. There are a number of bus stops on Broadway and George Street within a few minutes walk of the ABC Ultimo Centre. There is no on-site parking but there is a parking station nearby in Harris Street.

If you wish to go on a waiting list for cancellations, get in touch!



**SEE INFORMATION FOR  
OCTOBER AND  
NOVEMBER  
ACTIVITIES ON  
BOOKING FORMS  
ENCLOSED**

### OCTOBER: TOUR OF GOVERNMENT HOUSE ON FRIDAY 24 BEGINNING AT 12 MIDDAY. PEOPLE NEED TO ARRIVE AT 11.45AM

Government House is located within the Royal Botanic Gardens, between the Opera House and the Conservatorium of Music. Otherwise access is from the eastern side of Macquarie Street, near Bridge Street. Walk through the large gates adjacent to the Conservatorium and follow the marked signs. Circular Quay or Martin Place is the nearest railway station—it takes about 15 minutes for people to walk from either. Martin Place is also within walking distance for those coming from the Bondi Junction-Illawarra line. There is provision for (limited) disabled on-site parking but you must ring and arrange this with Government House beforehand (ring 9931 5222).

Numbers are limited to 15 to tour Government House and picnic afterwards in the grounds. Tours last 45 minutes. No photography is allowed inside Government House. Don't forget to complete the enclosed form as numbers are limited.



### NOVEMBER: END OF YEAR LUNCH ON THURSDAY 27, AT DOOLEY'S LIDCOMBE CATHOLIC CLUB.

We will meet for lunch in the dining room at noon. If you are there early get a couple of the big tables down at the end of the room—they will soon fill up with your fellow ROTA members.

Most people know how to get to Dooley's but if in doubt ring us at the office on 9663 2199 for directions. It is very convenient to Lidcombe Station and there is ample parking.